



The European Training Strategy & the Competence Model for Youth Workers to Work Internationally

ETS – What for?

The European Training Strategy (ETS) is the main strategy for the **development of quality youth work**

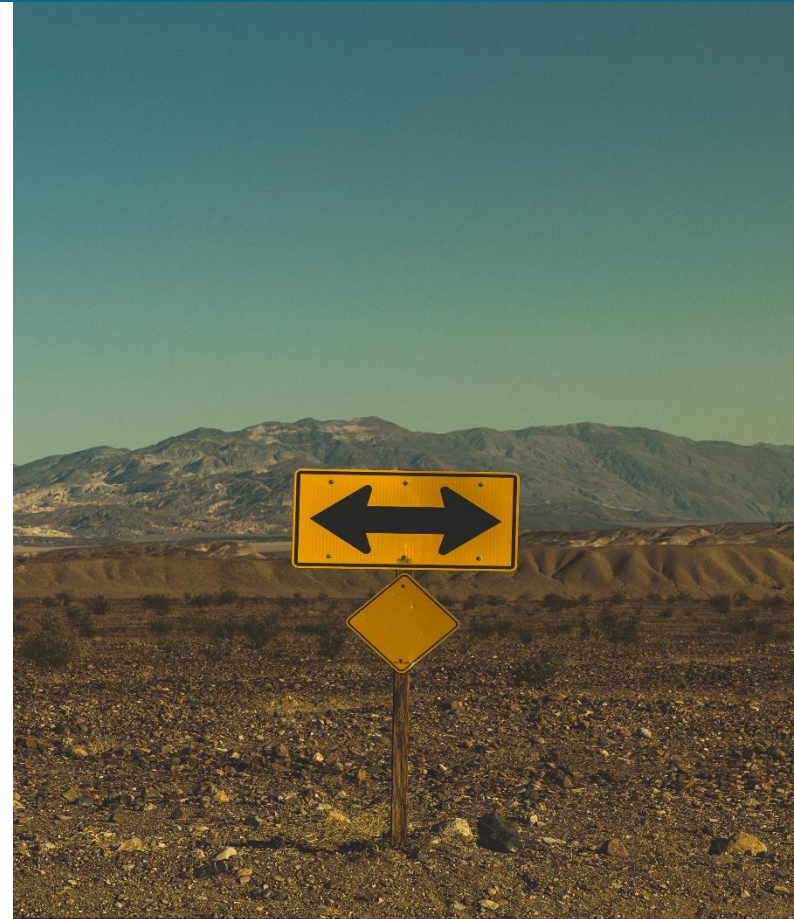


ETS supports **linking youth policy developments in youth work** with the capacity building of youth workers

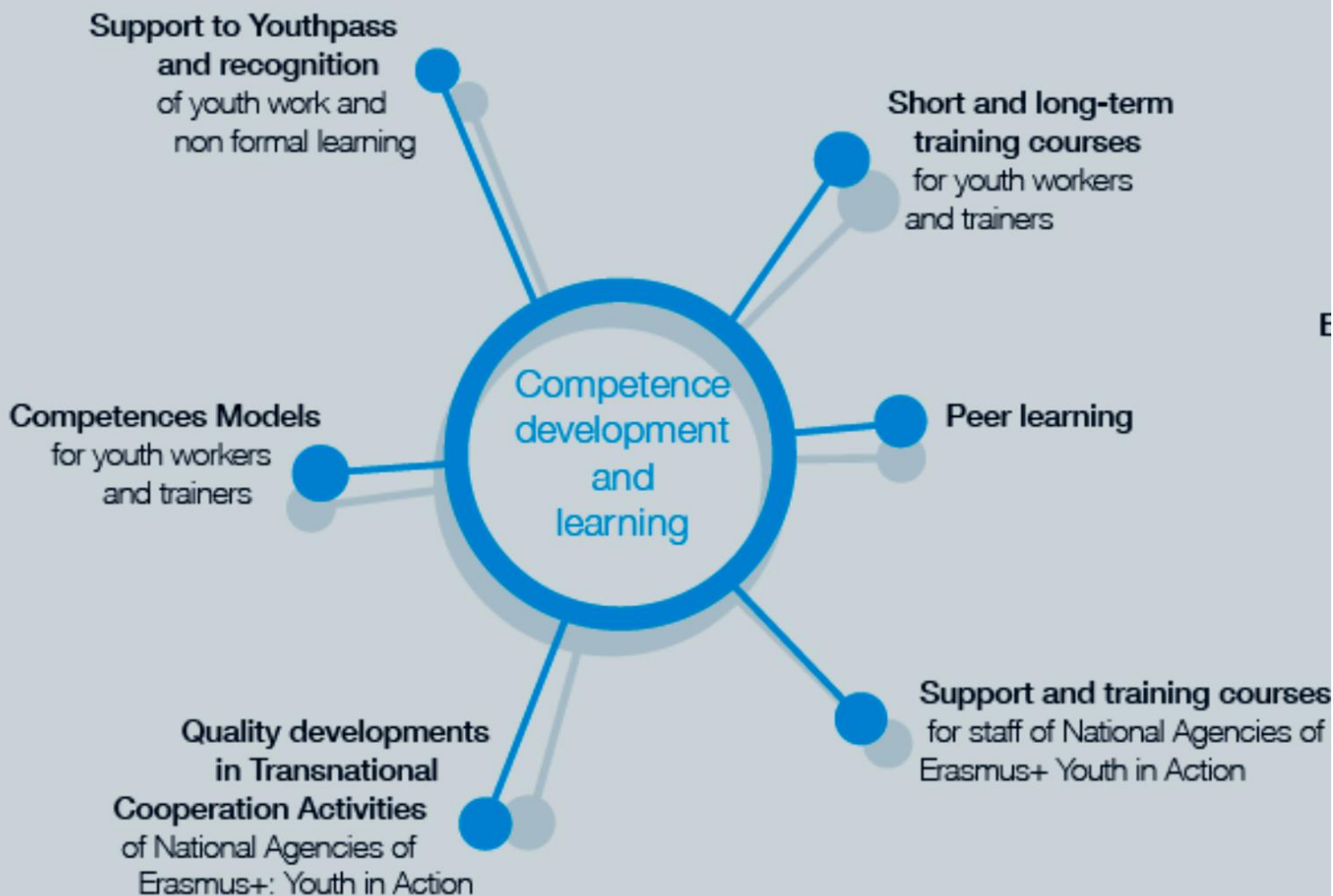
ETS – What does it focus on and who is it for?

Capacity building as one of the key elements for the development of quality youth work in Europe

- **Support for individuals**
- **Organisational development**
- **Systemic framework development**



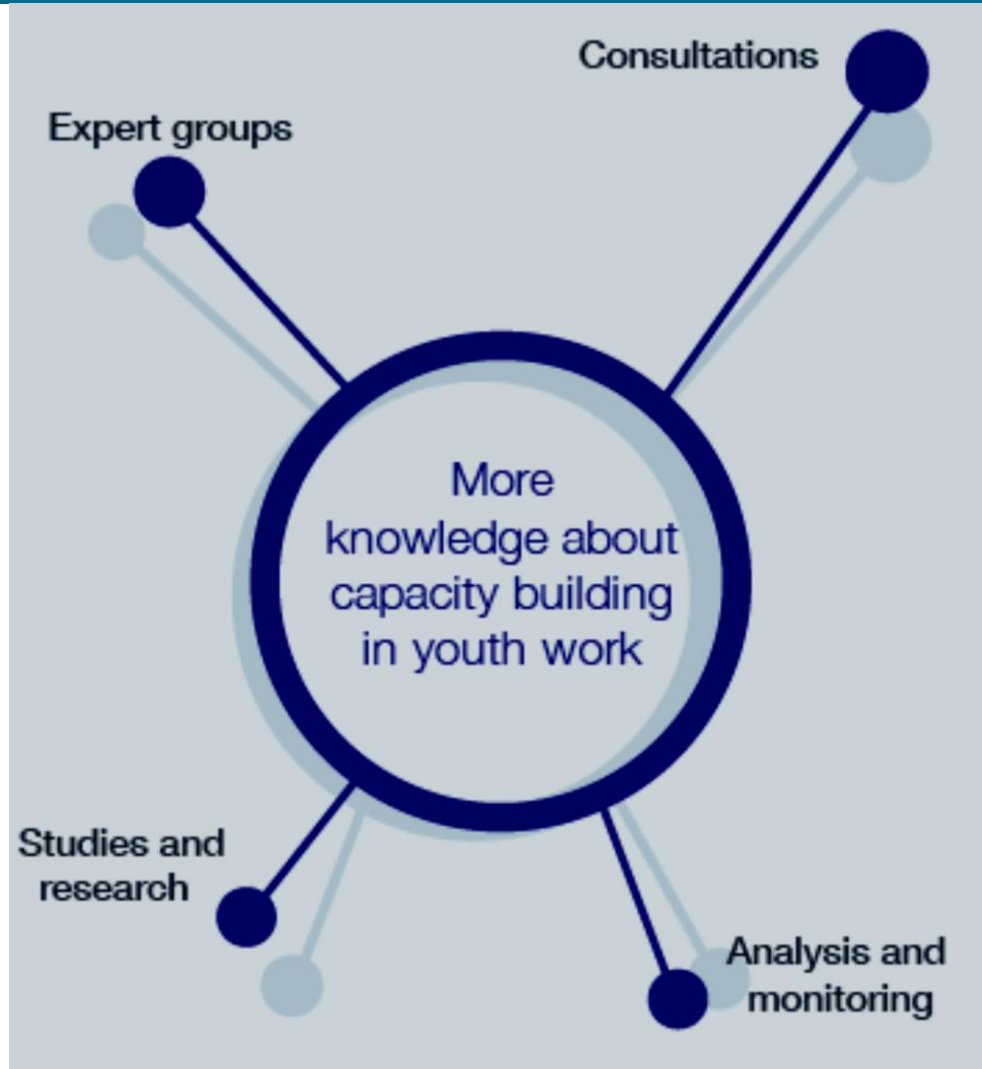
ETS - fields of actions : Competence development and learning



ETS - fields of actions : Online support and tools



ETS - fields of actions : Contribution to building [more] knowledge about capacity building in youth work



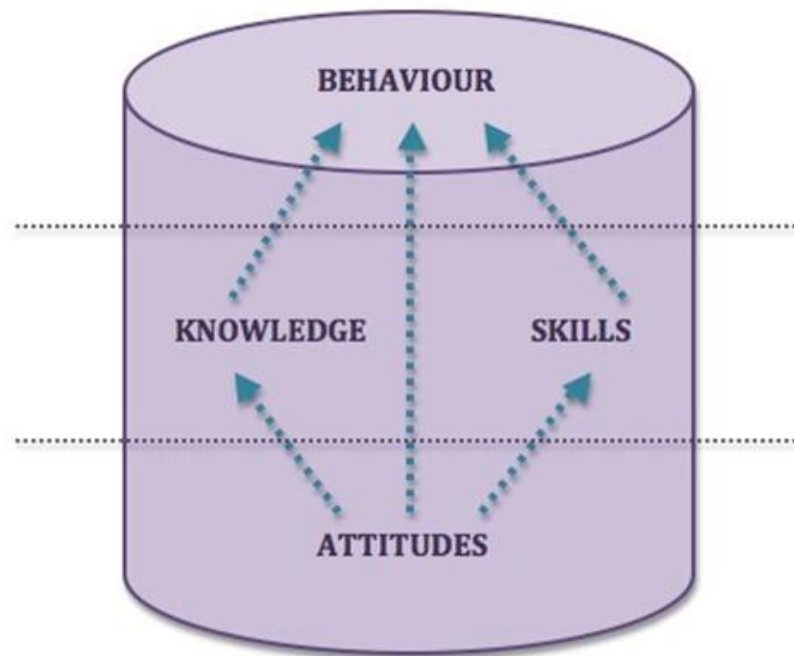
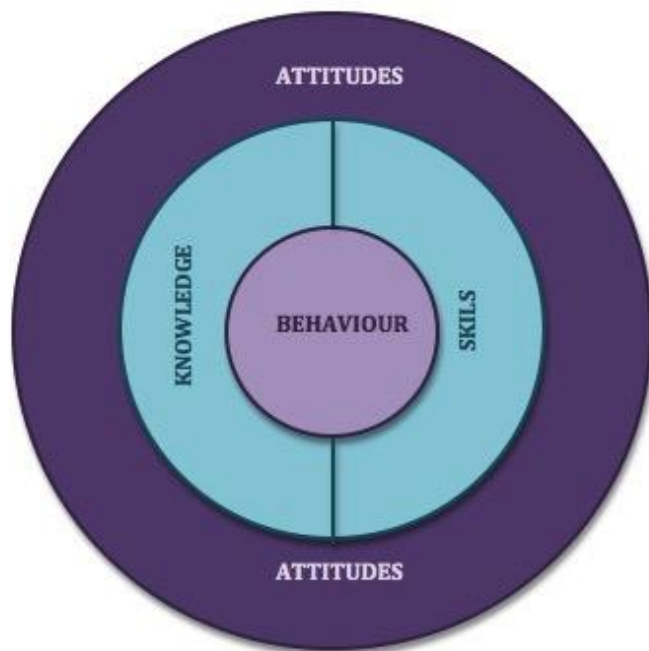
ETS Competence Model for Youth Workers : for what and for who?

Target groups

- **Youth workers** involved in international learning mobility projects for young people
- **Support staff** (pedagogical including trainers) of structures and organisations active in international mobility projects
- **Organisations and institutions** developing and offering training & education strategies for youth workers



ETS Competence Model for Youth Workers: the structure & the approach



ETS Competence Model for Youth Workers: much more than that!

Magic...

Intuition...

Authenticity...

Integrity...

Inner readiness...

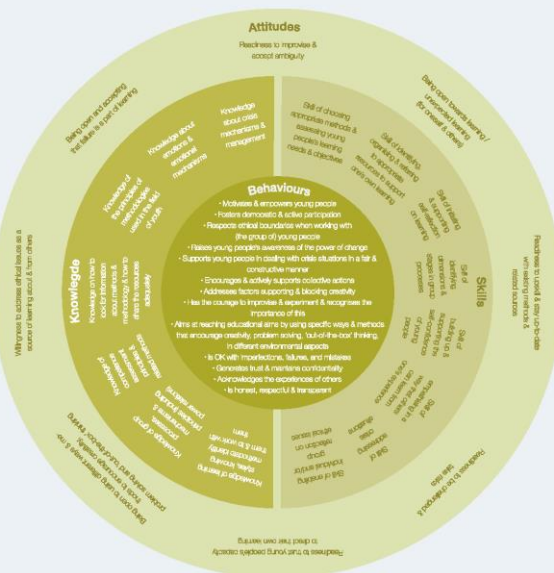


ETS Competence Model for Youth Workers: the competence areas

European Training Strategy

The competence model for youth workers and its attitudes, knowledge, skills, and behaviours

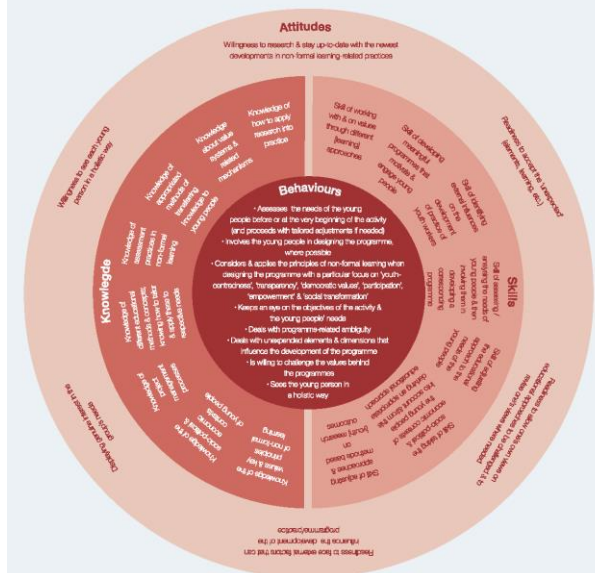
Facilitating individual and group learning
in an enriching environment



European Training Strategy

The competence model for youth workers and its attitudes, knowledge, skills, and behaviours

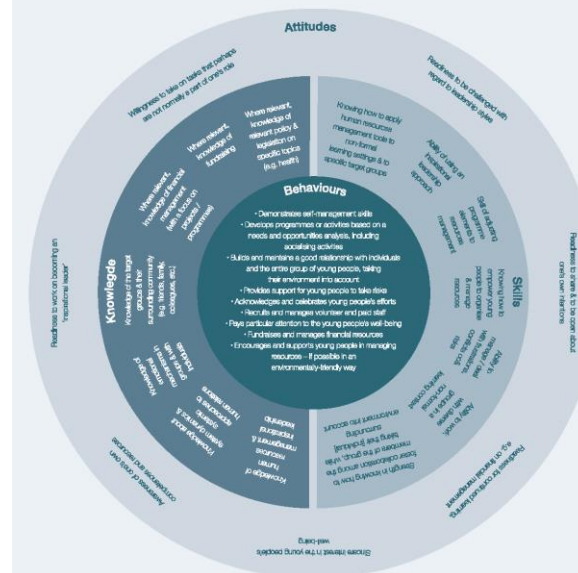
Designing programmes



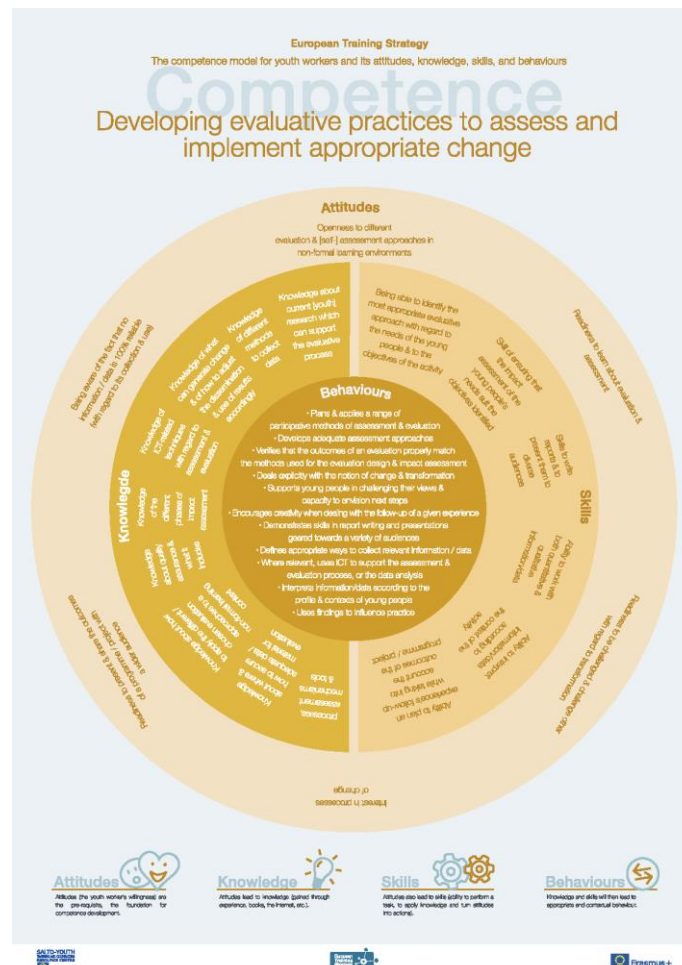
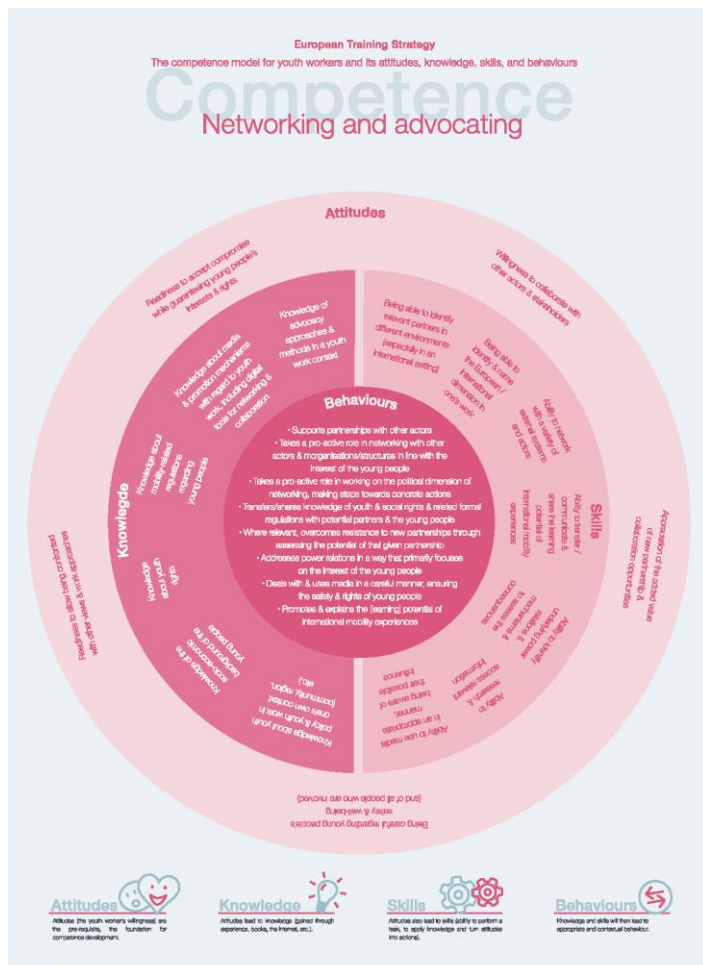
European Training Strategy

The competence model for youth workers and its attitudes, knowledge, skills, and behaviours

Organising and managing resources



ETS Competence Model for Youth Workers: the competence areas



ETS Competence Model for Youth Workers : the principles



GOOD
VIBES
ONLY

The NFL principles behind the competence model

- Learner-centeredness (i.e. a focus on the learner and their development)
- Agreement between youth worker and learners on learning objectives
- Transparency
- Confidentiality
- Attention to content and methodology
- Voluntariness
- Participation
- Ownership
- Democratic values and practices

ETS and the Competence Model for Youth Workers : next steps

- Currently: Pilot training activities online and offline YOCOMO
- Development of guidelines (2020 +)
- Translations into different languages (in process: DE, FR, SI (done!), SK, EE)
- Digital competences and civic competences to be added (2020)
- Contextualisation in the frame of the further developed ETS – focus on education and training of youth workers (2020 and beyond)



Thank you very much for your attention!

www.salto-youth.net/ets

Contact SALTO T&C RC

Gisele Evrard Markovic,
gisele@salto-youth.net

t

Pictures: Teddy Kelley, Bryan Goff, Simson Petrol, Pablo Garcia Salana, James Baldwin, Annie Spratt, Emily Goodhart, Mark Adriane, Karly Santiago, Daniel Cheung, Alejandro Salarez, Healthy Mond, Ashley Batz, Javier Penas, Gemma Evans, Nik, Aline Grubnyak, Dakota Corbin, Daria Nepriakhina, Rawpixel, Lacie Slezak - all for Unsplash. Illustrations of the competence model: Mandy Krühne for kreativraum